

Grey communities

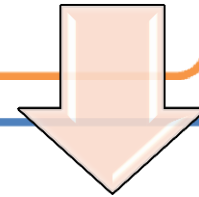
*A empirical study on
databases and repositories*

Hélène Prost

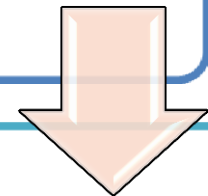
Joachim Schöpfel

Questions

Where is the boundary between inside and outside of the GreyNet community ?



Who uses “grey literature” as an object of research and publication?



Who works on documents belonging to grey literature without applying the term “grey literature”?

Methodology

A search for publications on grey literature in selected databases

Lista
SCOPUS
Web of Sciences
Pascal / Francis
E-Lis

Criteria

Published papers
Between 2000 and 2012
“Grey literature”
or variants in the
title, abstract or
keyword fields

Added references on

PhD theses
Master dissert.

Enrichment of data

Profession of
authors
Types of
institutions
Document
characteristics

The corpus of 2,440 references

Availability

- No reference was available in all sources, some are listed in 2 or 3 sources
 - 762 references (30%) are indexed in the WoS and SCOPUS

50% contain “grey literature” in the title, keywords or abstract

Type
of
grey

12% can clearly be identified as belonging to scientometrics or bibliometrics

49% mention PhD or Master theses (dissertations etc.) in their metadata

The journals

82% are articles

30% of the papers were published during the last two years (2010-2012) or are in press

Preferred journals
(GL in article title)

- *Publishing Research Quarterly*
- *Archaeologies*
- *Journal of the Medical Library Association*
- *Interlending and Document Supply*
- *Library Hi Tech News*
- *Collection Building*
- *Journal of Academic Librarianship*
- *INSPEL*
- *Science and Technology Libraries*
- *Documentation et bibliothèques*

The authors

The papers are signed by 5,490 different individual authors

Most of them signed only one paper (88%)

Selection of authors :



Authors with at least 3 papers in the whole sample

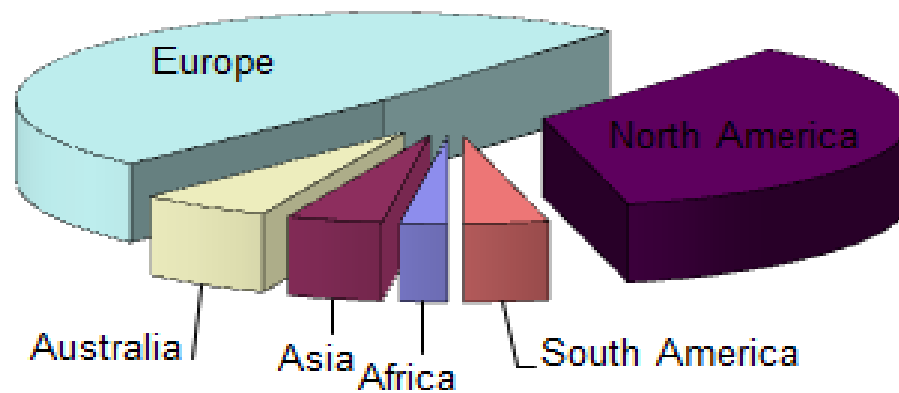


Authors with at least 1 paper that mentions “grey literature” in the title

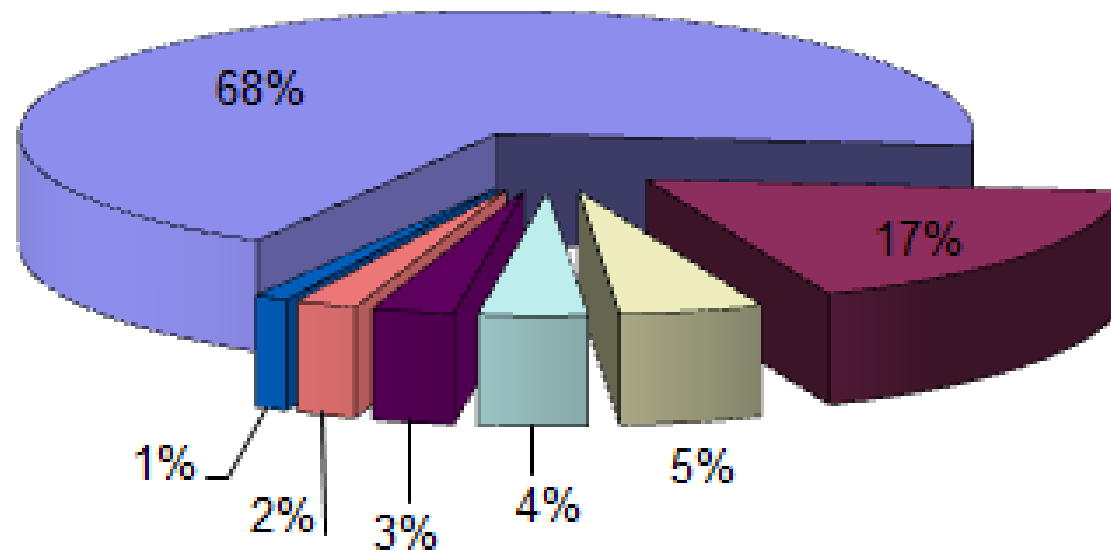


A sample of 433 authors

Geographic origins (n=433)

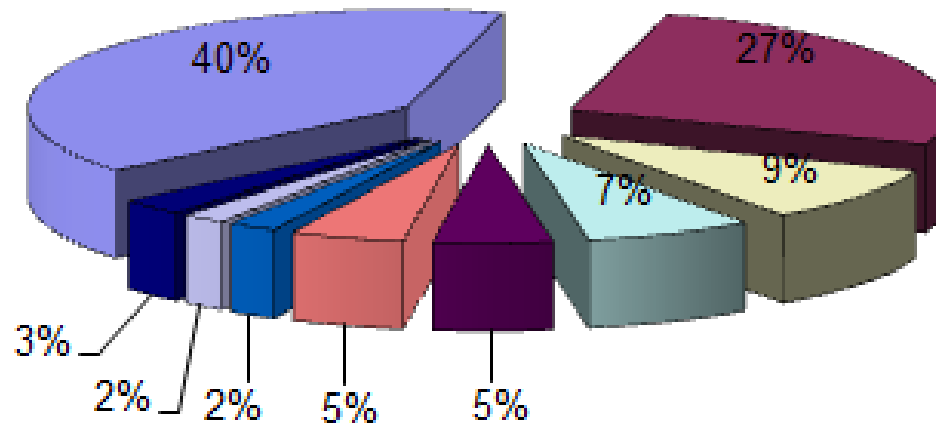


Place of work (n=433)



Higher education	Research	Hospital	Library
Not for profit	Corporate	Government	

Scientific domains (n=433)



Medical sciences

LIS

Social sciences & Humanities

Environment, agriculture

Other applied sciences

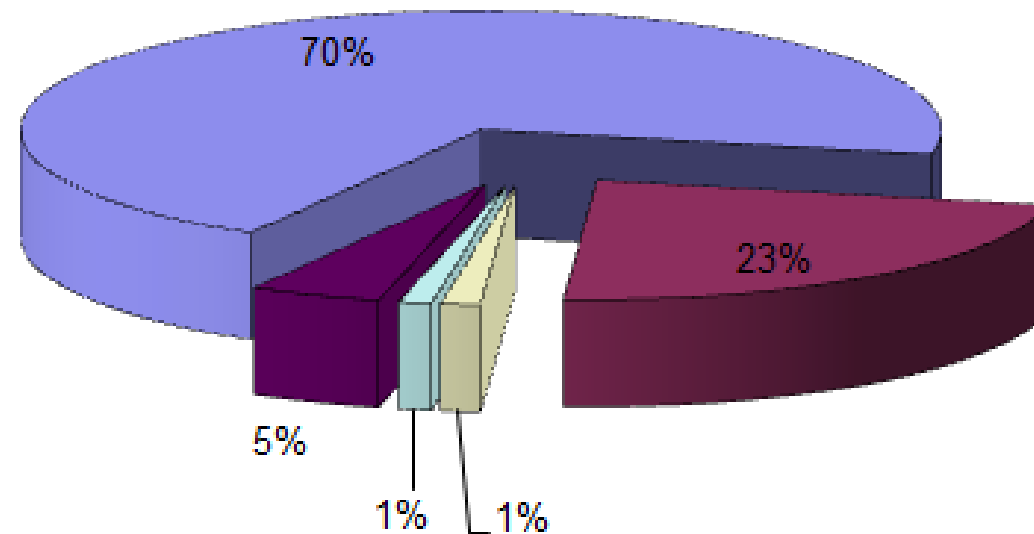
Natural sciences

Formal sciences

Engineering

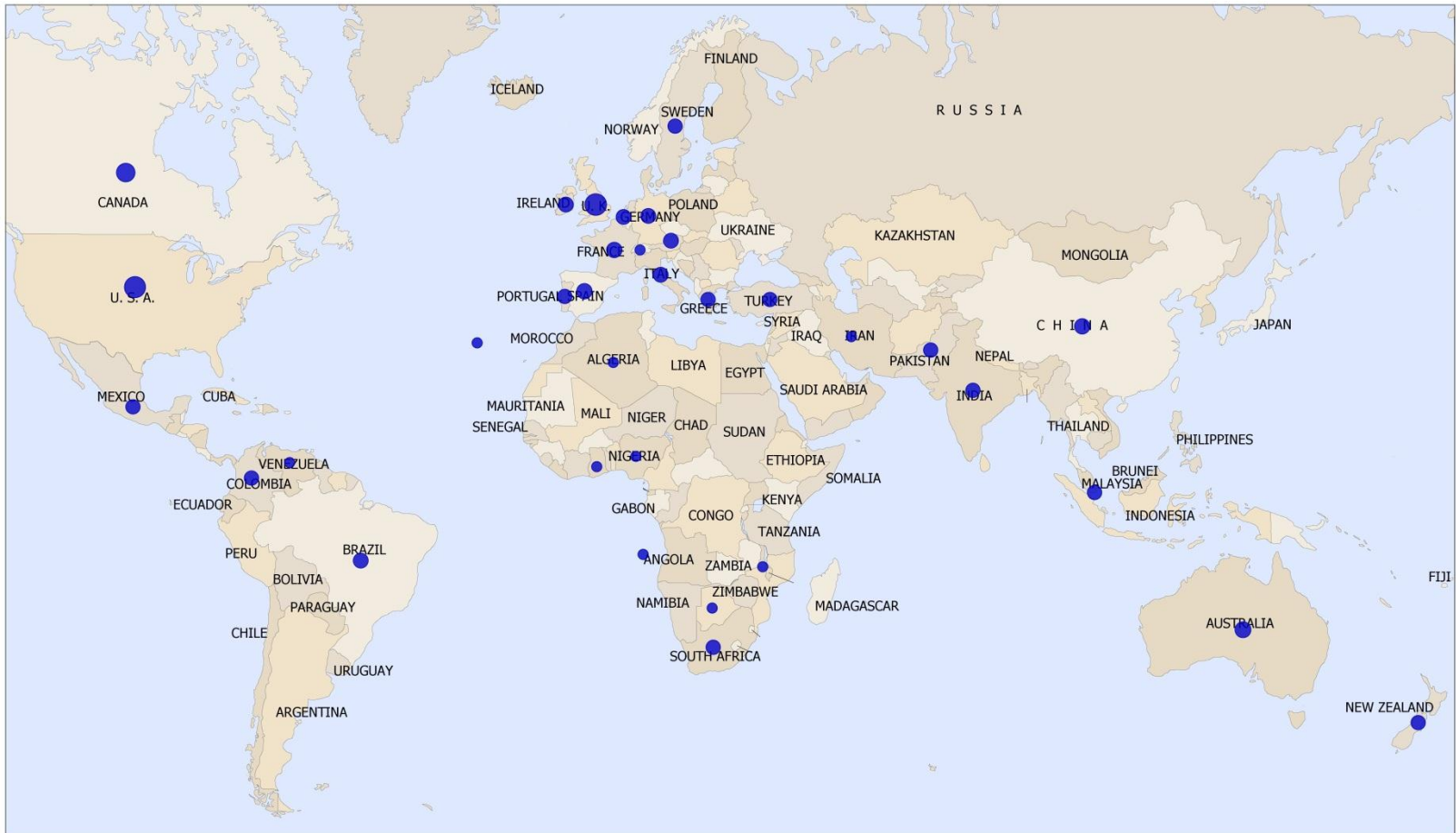
Multidisciplinary, n/a

Profession of authors (n=433)

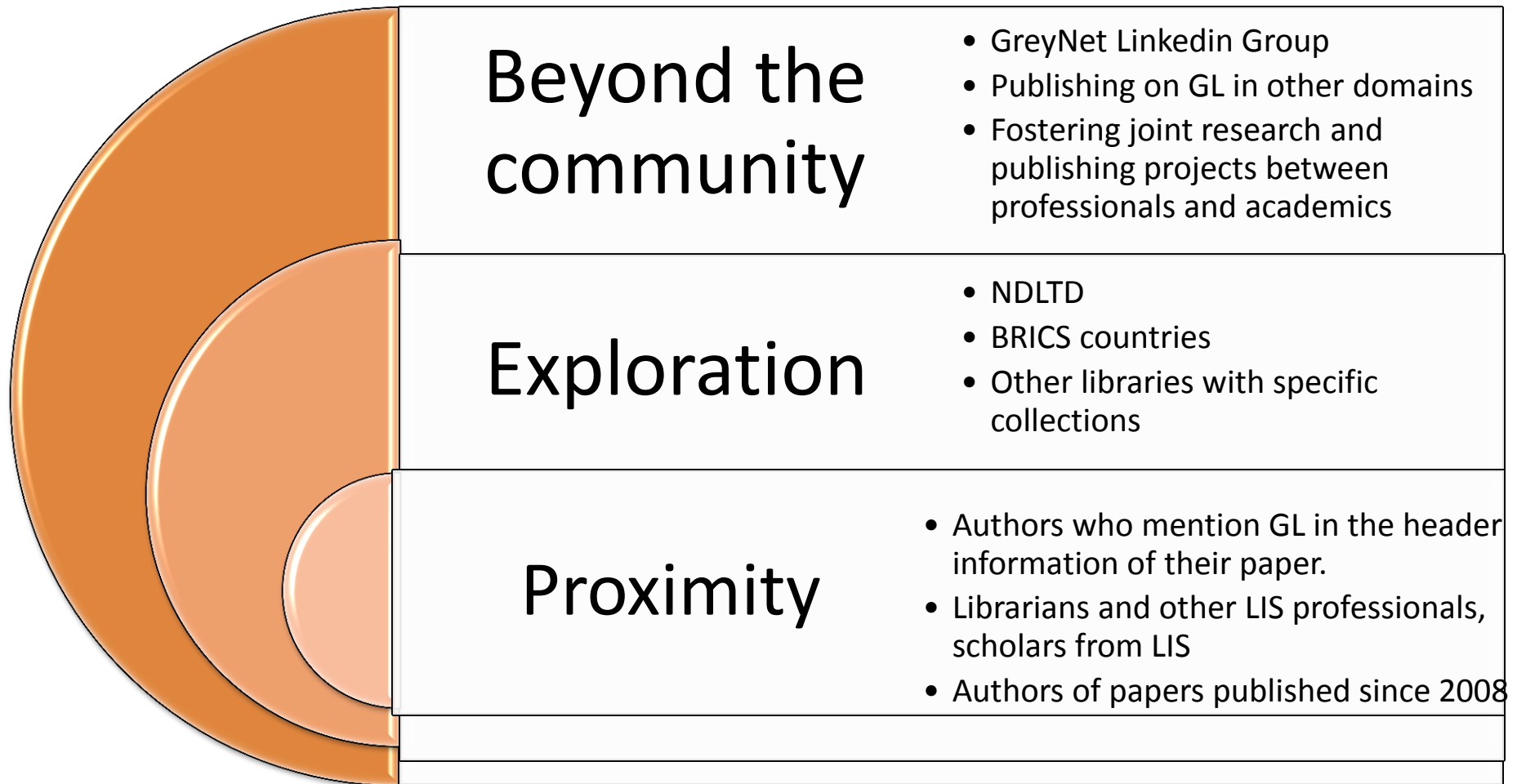


■ Scholar ■ Librarian ■ Computer expert ■ Editor ■ Other, n/a

Geographical origin of authors outside of GreyNet



How to foster sustainable development of GreyNet



Thank you for your attention

Hélène Prost

helene.prost@inist.fr

Joachim Schöpfel

joachim.schopfel@univ-lille3.fr

<http://www.citeulike.org/user/Schopfel/tag/gl14community>